

CrysDLL Plus™ for GoldMine

From Solica Consulting

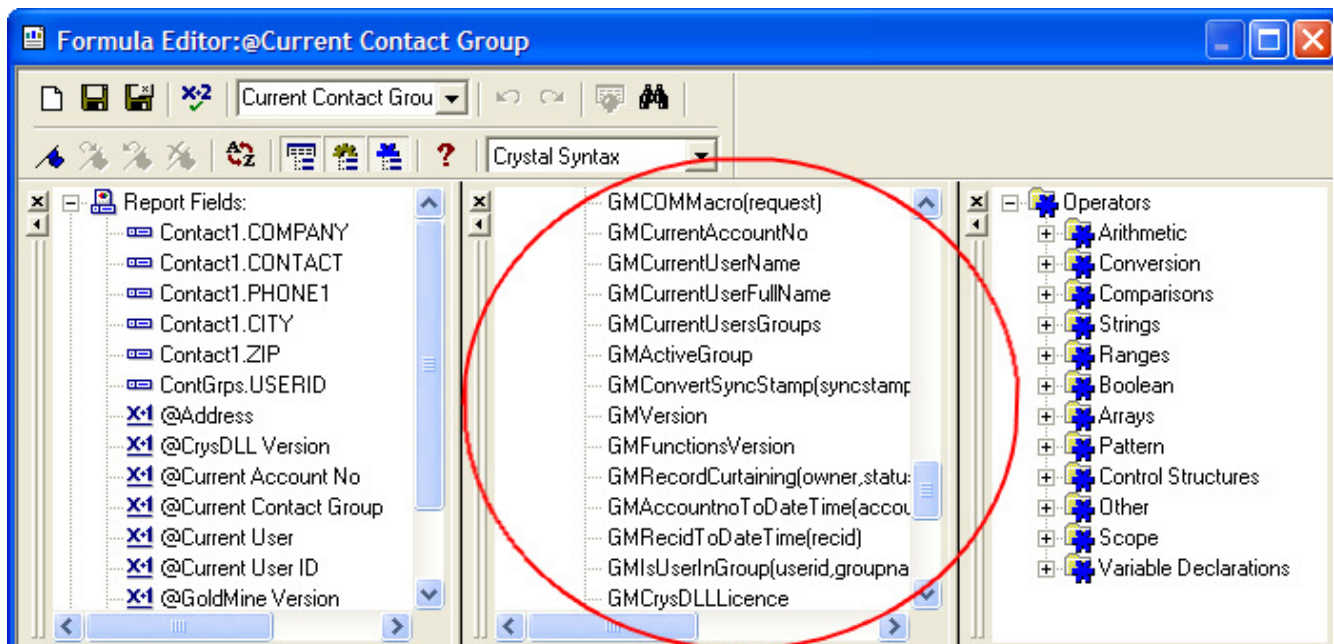
The Crystal Reports Functionality you Really Want for GoldMine

- Provides GoldMine-specific user defined functions for Crystal reports
- Other functions convert ACCOUNTNO and RECID to date/time allowing for easy reporting on record creation dates
- Easy to install and use with example reports.
- Allows you to write Crystal reports which select the **current contact record** only or the **currently active group!**
- Functions also read user permissions and group membership, **allowing record curtaining to be respected.**
- Single licence covers your whole site and sub-site(s).

Why CrysDLL?

If you develop or use Crystal Reports for GoldMine you know how writing reports which read only the current GoldMine record, or a contact group, or which respect record curtaining is almost impossible. Crystal simply does not have the functions to do this.

CrysDLL provides a new set of functions which are part of the Crystal function set – as shown below in the screenshot on the below. Note that



All functions beginning with GM are from the CrysDLL package.

These functions fill a much needed gap in the way Crystal Reports can show GoldMine data. For example the GMCurrentAccountNo function retrieves the GoldMine account number of the currently displayed record and can easily be used in record selection criteria to show a report with other current record only. Similarly GMActiveGroup gets the group number of the currently active group in GoldMine, making it easy to write reports which select only record in the current group.

CrysDLL Plus™

Other functions convert Recids and AccountNo fields to date/time, making it easy to report on records in all GoldMine tables created within given time ranges. Functions are also provided to support group membership and curtaining.

Functions List

The following functions are available (ignoring some ones used in the older version only)

GMCOMMacro(request) General UI COM Macro request to GoldMine. Useful to get current record data,	GMCurrentAccountNo Account number for the currently displayed GoldMine record. Typically used to write Crystal reports which show just the current record. Simple and powerful!
GMCurrentUserName Current GoldMine user name	GMCurrentUserFullName Current full name of logged in user
GMCurrentUsersGroups Comma separated list of the names of current groups of which this user is a member	GMActiveGroup Group number (the header Recid) of the currently active group. Makes it easy to write reports which select just the currently active group.
GMRecidToDateTime(Recid) Converts a recid to the date/time value showing when the record was created	GMAccountnoToDateTime(Accountno) Converts AccountNo format field to datetime value showing when record was created
GMRecordCurtaining(owner,status) Returns value showing how record given is curtained from current logged in user given the owner and status fields from Contact1.	GMVersion GoldMine version
GMConvertSyncStamp(stampvalue) Converts a syncstamp or logstamp field from the transaction logs into a date/time value showing related record was synced/edited. (Specialist use only)	GMFunctionsVersion Version of CrysDLL being used
GMIUserInGroup(userid, group) Checks to see if a userid is in a particular group. Can be used to select records from any table which were created/edited by users in a particular user group.	GMDDE(request) General DDE request to GoldMine
GMIscalVisible(userid) For a calendar (pending tab) record for user USERID, returns true if it is visible for the current user. Only for GoldMine 6.7 and above	GMIshistVisible(userid) For a history tab record for user USERID, returns true if it is visible for the current user. Only for GoldMine 6.7 and above

Using these functions is easy if you are able to write normal Crystal reports for GoldMine and therefore have some understanding of GoldMine table structures. A number of example Crystal reports are provided as part of CrysDLL, in both SQL and dBase versions.

Licensing and Evaluation

CrysDLL is licensed on a site or multi-site basis linked to the 8 digit master GoldMine licence number (6 digit number with GoldMine 7 and above) – the number you see in GoldMine when you use the Help | About command. For example a system might be E-001580-123456. The licence key for CrysDLL is then linked to 123456 and will not run on other systems.

If you add extra licences to your GoldMine system ('bump' licences) these do not change the main licence number, just increase the count. This does not affect the CrysDLL licence number. If you have sites with different 6/8 digit licence numbers you will need separate licences for those sites.



CrysDLL Plus™

The price does vary slightly according to the total number of GoldMine licences you have on your system. The same licence will also work at sub-sites as these have the same 8 digit GoldMine licence number.

An unlicensed copy will still run but will give warning messages at regular intervals.

Pricing

CrysDLL is priced primarily on a site basis, with some variation depending upon the total number of GoldMine licences on the main site. Payment can be via credit card, charged in pounds and converted to your local currency by your card provider

Total number of GoldMine licences	Price
1-10	£225 (about US\$450)
11-24	£300 (about US\$600)
25+	£400 (about US\$800)

If you increase the number of licences across one of the band boundaries above, CrysDLL Plus may become unlicensed and give the evaluation messages. A new licence will be issued on payment of the licence price difference. VAT is charged for UK orders and in certain cases for orders within the European community.

Please note that for orders direct from Solica are charged in pounds and then converted to your local currency by your card provider. Conversions are approximate and vary with time!

Ordering

The evaluation contains an order form, accessible via Start |Program Files | SyncFolders Plus or in file order.txt. There is also a downloadable order form on our web site. Simply fill this out, giving details of your GoldMine licence number and a credit card, then fax to our offices. We'll e-mail you an unlock code and mail you a receipt. Order from your GoldMine reseller or from Solica directly.

Common Questions

How does CrysDLL Plus work? CrysDLL Plus is a special format DLL which is automatically recognised by Crystal reports and adds user functions to the Crystal expression builder. The DLL implements functions which use a mixture of DDE and GoldMine API calls. Special logic ensures that the functions are efficient, only actually calling GoldMine when required. The functions can therefore be used in record selection criteria or similar situations without slowing them significantly. However the use of an external function may prevent some Crystal optimisation and can slow up retrieval in some cases.

Which versions of GoldMine is it compatible with? Versions 5.5 onwards. However some functions will have problems with version 5.7.30503 due to a bug in the FrontRange code which we hope will be fixed soon. A newer version exists for GoldMine 6.7 and above which is more efficient and reliable as it uses the COM interface to GoldMine rather than the Borland Database Engine.

Which versions of Crystal Reports is it compatible with? Our development has used Crystal 7, 8.5 and 11 as testbeds. It should work with 9 and 10 as well. If in doubt please try it out with the evaluation.

Do I only need to have a licence for the system on which I do development? No, CrysDLL has the same licence needs for both development and runtime. All systems in which it is used should be licensed, or it will run in evaluation mode.

CrysDLL Plus™

Contact Details

For further information please contact Solica by any of the means shown below:

E-mail	info@solica.com
Telephone	International +44 1732 377700
Fax:	International +44 1732 350444
Post:	Solica Consulting Limited 13 Tonbridge Chambers Pembury Road Tonbridge Kent TN9 2HZ England



GoldMine is a registered trademark of FrontRange Solutions Inc. GoldMine Business Contact Manager is a trademark of FrontRange Solutions Inc. CrysDLL and CrysDLL Plus are trademarks of Solica Consulting Limited. Crystal Reports is a trademark of Business Objects. Other products and brands are registered trademarks or trademarks of their respective owners/companies.